

Disney's Screen Scenes On-Line Help Contents

To select a topic, single-click one of the underlined topics listed, or use the keyboard Tab key to highlight the topic you're interested in and press Enter.

The following Help Topics are available:

[How Disney's Screen Scenes Works](#)
[Using the Toolbar](#)
[How to Display Wallpaper Images](#)
[Using the Wallpaper Setup](#)
[How to Display Screen Scenes Images](#)
[Using the Screen Scenes Setup](#)
[How to Uninstall Disney's Screen Scenes](#)
[Information](#)
[Answers to Common Questions](#)
[How to Reach Disney Interactive](#)

How Disney's Screen Scenes Works



Disney's Screen Scenes software installs components in several directories on your hard drive. The desktop wallpaper application (the Toolbar) and most of the Screen Scenes program files are installed in the **DISNEY\SCENES** directory (or the alternate directory you specified during installation). A few other program files are installed in the **WINDOWS** directory.

The Screen Scenes image files are stored in the \<**Directory Name**>\<**SCENES**>\<**Collection Name**> subdirectory. The <**Collection Name**> varies with each Disney Screen Scenes product.

If you installed with the default settings, Disney's Screen Scenes will:

- Run automatically each time you start Windows.
- Change the wallpaper image once per day.
- Play the Screen Scenes images after two minutes of mouse and keyboard inactivity.
- Change the Screen Scenes image once per minute.
- Select images in random order.

Using the Toolbar



Previous wallpaper/Scan wallpaper

Click this Toolbar button once to display the previously available wallpaper image. Click and hold the button to cycle through a list of the available images (the image titles appear in the Toolbar's caption bar). Release the button to display that image.



Next wallpaper/Scan wallpaper

Click this Toolbar button once to display the next available wallpaper image. Click and hold the button to cycle through a list of the available images (the image titles appear in the Toolbar's caption bar). Release the button to display that image.



Select wallpaper

Click this Toolbar button to bring up the Wallpaper selection window. From here you can select wallpaper images or modify the Wallpaper Setup options.



Select screen scene

Click this Toolbar button to bring up the Screen Scenes selection window. From here you can select Screen Scenes images or modify the Screen Scenes Setup options.



Information

Click this Toolbar button to display technical support information, system configuration information, and program credits.



Help

Click this Toolbar button to display Disney's Screen Scenes on-line help.

NOTE: If you place your mouse cursor over a toolbar button without clicking, a yellow box (rollover text) will appear identifying the function of that button.

How to Display Wallpaper Images

What is “wallpaper”? Wallpaper is an image or decorative pattern that replaces the standard one-color background on your Windows desktop.

You control Disney’s Screen Scenes using the Toolbar. If you maintained the default settings during installation, the Toolbar will automatically appear each time you start Windows. If you don’t see the Toolbar on your Windows desktop, start the program in the following way:

1. In the Program Manager, double-click on the “StartUp” program group.
2. In the StartUp window, double-click the “Screen Scenes” program icon.



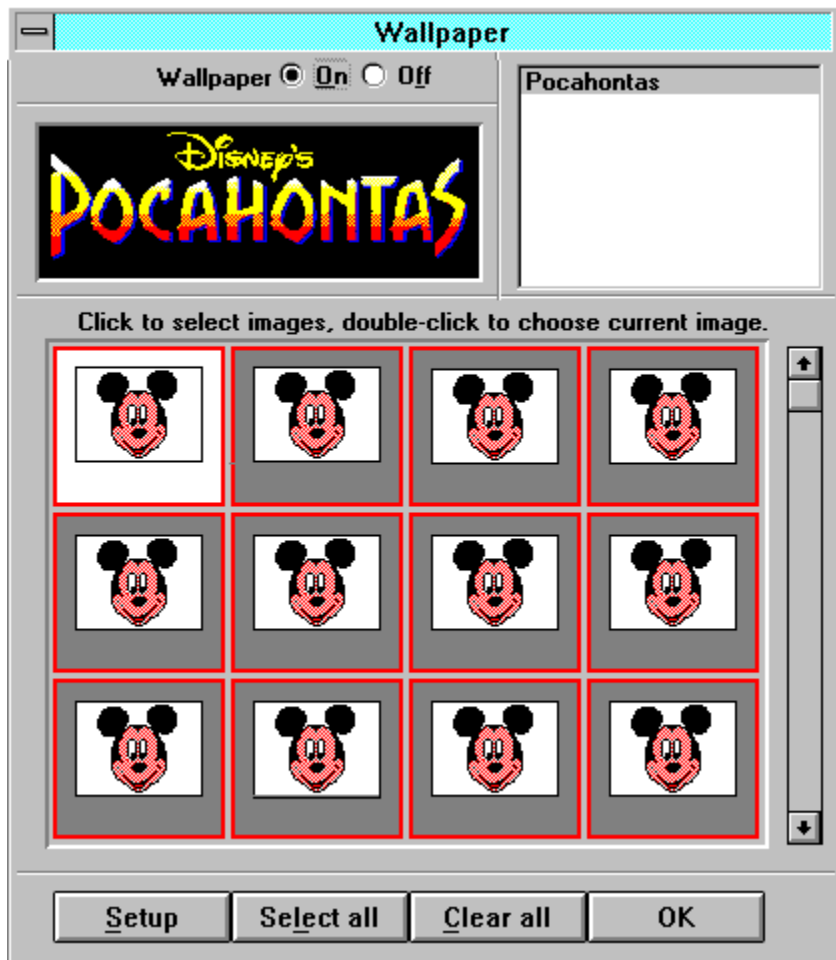
Use the caption bar to click and drag the Toolbar anywhere on your desktop.



Click the “Select wallpaper” button on the toolbar.



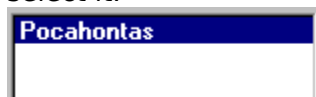
The following window will appear:



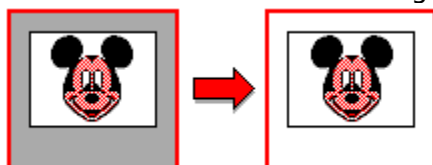
Turn the desktop wallpaper on and off by clicking the “On/Off” buttons.



The listbox window in the upper right corner of the dialog box shows the names of the Wallpaper collections you have installed, with the name of the currently active collection highlighted. If you’ve installed more than one Screen Scenes collection and you wish to access images in another collection, simply click on the collection name in the listbox to select it.



To select an image as your very next wallpaper and immediately exit the Wallpaper window, double-click the button showing the image’s “thumbnail”.



To deselect all images in a collection at once, click the “Clear all” button.



NOTE: If you click “OK” after selecting “Clear all”, a dialog box will warn: “You must select at least one image.”

To select all images in a collection at once, click the “Select all” button.



All the images in that collection will become available for use as desktop wallpapers.

To unselect a particular image, single-click the image’s “thumbnail” button. The button will change appearance to indicate that it’s now unavailable.



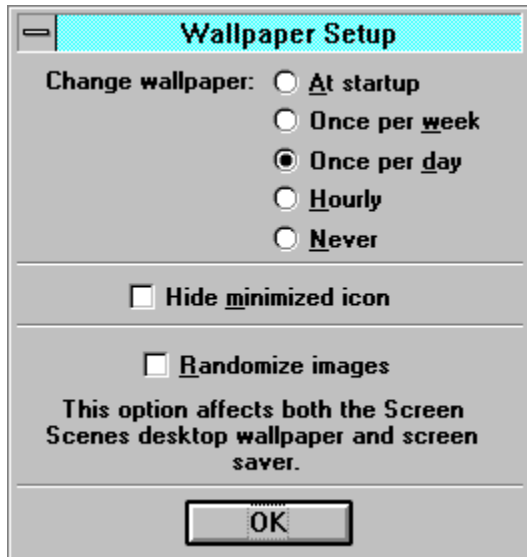
To re-select that image, single-click the button again. The button will be edged with a red border to indicate that it’s now available.



The Wallpaper window displays 12 thumbnail images at a time. Use the scrollbar to scroll through all of the images in the collection.

Using the Wallpaper Setup

Click the “Setup” button at the bottom of the Wallpaper window to view and modify your desktop wallpaper options.



Set the frequency that your wallpaper changes by clicking any of the buttons in the “Change wallpaper” section. Your options include: At startup, Once per week, Once per day, Hourly and Never. If you’ve made only one wallpaper image available, it won’t change regardless of your selection.

Hide the Toolbar icon by checking “Hide minimized icon”. When you minimize the Toolbar, the icon will not appear on your desktop. To force the icon to reappear on your desktop, open the Startup or Disney Interactive program group and double-click the Screen Scenes icon.

Display images in random order by checking “Randomize images”. If you’ve made only one wallpaper image available, checking this option will have no effect.

Click “OK” to return to the Wallpaper window.

How to Display Screen Scenes Images

What is a screen saver?

In the past there was a danger that images left onscreen for long periods would “burn” into the monitor’s phosphor, leaving a permanent “shadow” of the image on the screen. Such a danger is significantly reduced on today’s conventional color monitors, although it’s still possible to damage the displays of portable or laptop computers that use monochrome or liquid crystal (LCD) displays. The monitor’s color balance can be negatively affected, and in some cases etching or shadowing can still occur.

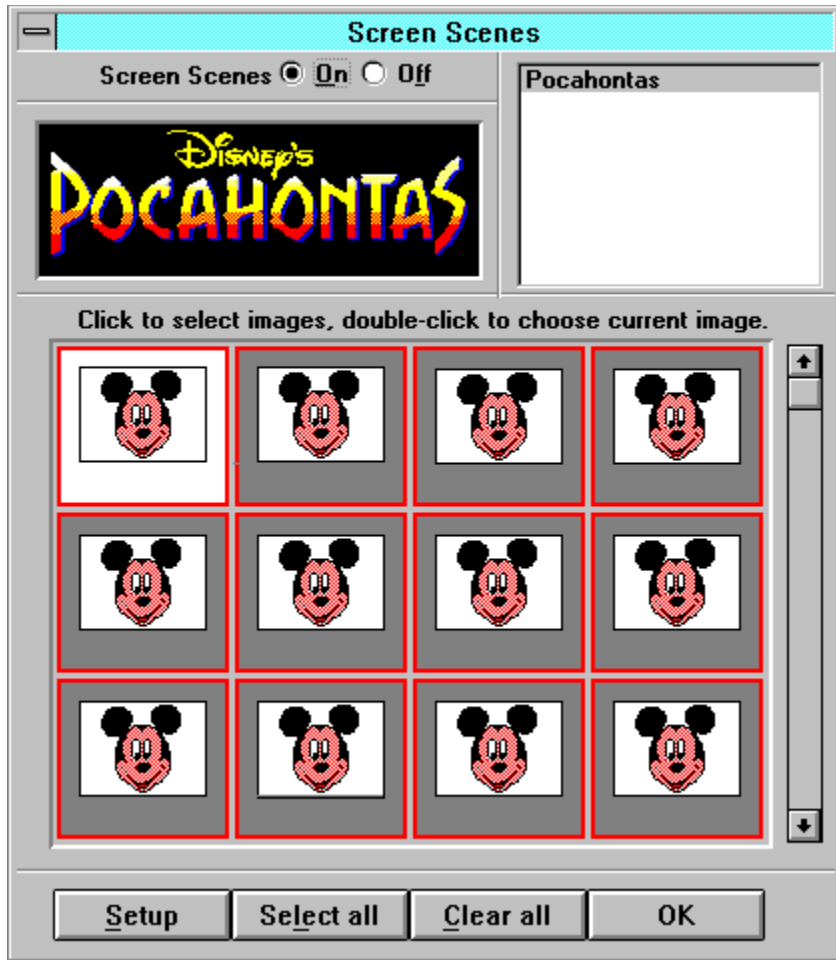
Since it’s inconvenient to turn your computer’s monitor on and off several times each day to prevent burn-in, screen savers were invented. They alter the monitor’s display on a regular basis so that the same image doesn’t remain onscreen too long. As a side benefit, these screen savers add beauty and entertainment to your desktop environment.



Click the “Select screen scene” button on the toolbar.



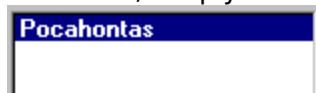
The following window will appear:



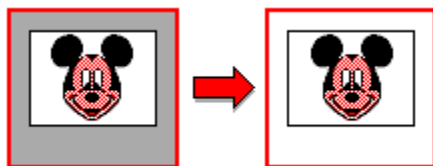
Turn the screen scenes on and off by clicking the “On/Off” buttons.



The listbox window in the upper right corner of the dialog box shows the Screen Scenes collections you have installed, with the currently active collection highlighted. If you’ve installed more than one Screen Scenes collection and you wish to access images in another collection, simply click on the collection name in the listbox to select it.



To select an image as your very next Screen Scene and immediately exit the Screen Scenes window, double-click the button showing the image’s thumbnail.



To deselect all images in a collection at once, click the “Clear all” button.



NOTE: If you click “OK” after selecting “Clear all”, a dialog box will warn: “You must select at least one image.”

To select all images in a collection at once, click the “Select all” button.



All the images in that collection will become available for use as screen scenes.

To deselect a particular image, single-click the image’s thumbnail button. The button will change appearance to indicate that it’s now unavailable.



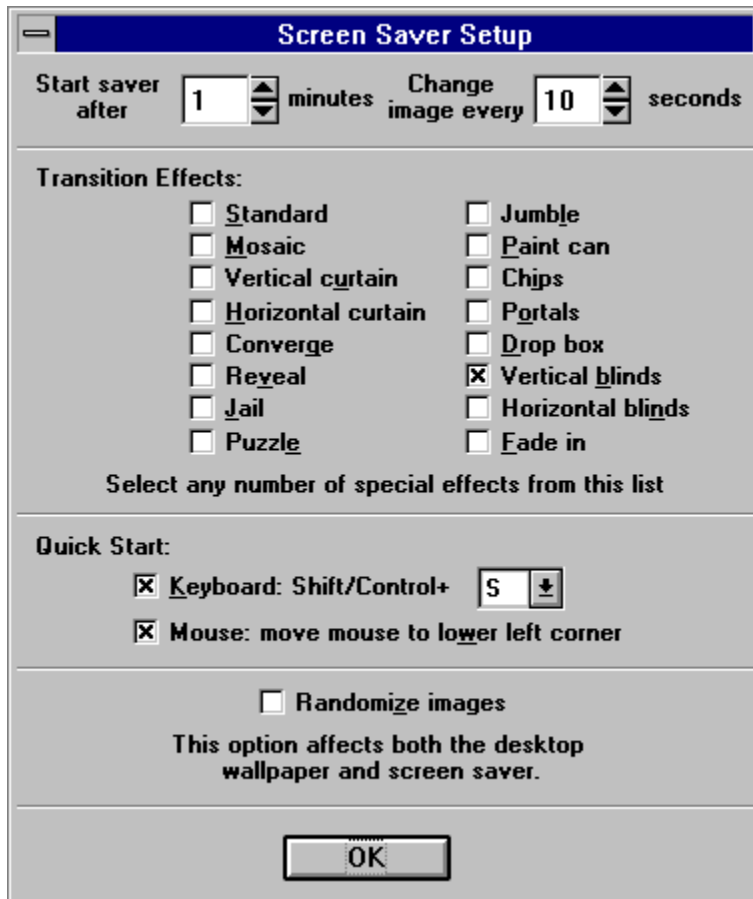
To re-select that image, single-click the button again. The button will be edged with a red border to indicate that it’s now available.



The Screen Scenes window displays 12 thumbnail images at a time. Use the scrollbar to scroll through all of the images in the collection.

Using the Screen Scenes Setup

Click the “Setup” button at the bottom of the Screen Scenes window to view and modify your screen scene options.



Set the period of keyboard/mouse inactivity before the screen scene appears in the “Start scenes after” box. The delay can be anywhere from 1 to 99 minutes. Click on the up and down arrows to change the number of minutes, or click inside the edit box to type in a new number.

Set the number of seconds each scene remains on the screen in the “Change scene every” box. Images can remain onscreen anywhere from 10 to 60 seconds in increments of 5 seconds.

Select the special effect that will introduce each new image by clicking on any number of the “Scene Transition Effects” buttons. Your choices are:

- Standard
- Mosaic
- Vertical curtain
- Horizontal curtain
- Converge
- Reveal
- Jail

- Puzzle
- Jumble
- Paint can
- Chips
- Portals
- Drop box
- Vertical blinds
- Horizontal blinds
- Fade in

Select one or several or all of the special effects listed. The transition effects used in painting the next screen scene will be randomly chosen from the list you've created.

To start your screen scenes at the stroke of a key, click "Keyboard" in the "Quick Start" section and choose a "hotkey" from A through Z. Once you've closed all of Disney's Screen Scenes windows, activate the screen scene by pressing Shift/Control/<hotkey>.

If you check "Mouse: Move mouse to <lower/upper> left corner", you can activate the screen scenes by moving the mouse to the lower or upper left corner of the screen. (The location of the corner is dependent upon the Windows version you're running.) This setting will not take effect until you've closed all of Disney's Screen Scenes windows.

Display images in random order by checking "Randomize images". If you've made only one screen scene image available, checking this option will have no effect.

How to Uninstall Disney's Screen Scenes

Uninstall Disney's Screen Scenes by opening the Disney Interactive group in Program Manager and double-clicking the "Uninstall Screen Scenes". You can erase all installed collections or one particular collection.



To erase an individual collection, single-click that collection's name to highlight it, then click "Erase collection". A warning dialog will appear to verify your decision. Only the images from that collection will be deleted from your hard drive. All other collections (and Screen Scenes program files) will remain.

To erase all collections, click on "Erase all". A warning dialog will appear to verify your decision. All screen scene collections and all program files will be deleted from your hard drive.

If you have only one screen scenes collection installed, the "Erase collection" button will be grayed out to indicate that it is not available. When only one collection is present, you can only "Erase all" images and programs from your hard drive.

Information



Click on the Toolbar “information” button to display useful information about Disney’s Screen Scenes and your computer.

The phone number for Disney Interactive Customer Support is listed here.

You’ll also see valuable system information, including the version number of your Screen Scenes program files, your Microsoft Windows version number, your system memory, resources available, and most importantly, the resolution and depth of color of your video display. Remember: Disney’s Screen Scenes runs best at a minimum resolution of 640x480 pixels, and a minimum color depth of 256 colors.

The Information window also displays the credits of the many people who devoted their time and efforts to bring you Disney’s Screen Scenes.

Answers to Common Questions



Q. How do I make the images look better on the screen?

A. Make sure you're running Windows in 256-color or higher mode. To do this, your video display driver must support 256 colors, not just 16.

Q. How do I find out which video driver I'm using? And if it doesn't support 256 colors, how can I use one that does?

A. To find out which video driver you're using, check your computer's Windows Setup. In Program Manager, open the "Main" program group and click on the "Windows Setup" icon. Look at the "Display" field. If the driver name shown there contains the number 256, it probably supports 256 colors. If the name of the driver contains the number 16 (not 256), you should probably install a new display driver. Contact your video card manufacturer about upgrading and installing the appropriate video driver software.

Q: Using Windows Setup, I changed my video driver to the wrong 256-color (e.g. "Video 7"), and now Windows won't run. All I get is a black screen (possibly with random colored bars or lines). How do I get Windows to run again?

A: Start your computer with a DOS formatted, bootable disk in your A: drive. When you see an A:> prompt, type:

```
C:  
CD WINDOWS  
SETUP
```

In the Setup program, use the arrow keys to move the highlight up to the "Display" line and press Enter. In the next screen, use the arrow keys to scroll down to "VGA" and highlight it. Press Enter, then press Enter again to "keep" the currently installed version of the driver (it may ask you to insert a Windows installation disk to get the files it needs). Once you see the C:> prompt again, reboot your computer to restart Windows.

Then, contact your computer and/or video driver manufacturer's technical support to get information on how to install and select the correct 256-color driver for your system.

Q: When the screen saver tries to run, I get a message bar across the top of the screen stating "Unable to create or display image!" or "Not enough free memory to decompress image". I think I have plenty of memory. Why does this occur?

A: Depending upon your screen resolution and number of available colors, each image can take up to 2.4 megabytes to display. If you are using both the desktop wallpaper (either Disney's Screen Scenes or some other wallpaper) and the screen saver, this can double to 4.8 megabytes, plus a decompression buffer for temporary memory requirements of up to 7.2 megabytes.

The following is a table showing how much memory is needed to display one image at various screen resolutions and colors:

Screen Size	Number of Colors			
	16	256	32-64K	16 Million
640 X 480	154K	307K	614K	921K
800 X 600	240K	480K	960K	1.44M
1024 X 768	393K	786K	1.54M	2.31M
1280 X 960	614K	1.22M	2.45M	3.66M

To determine your actual temporary memory requirement, you need to TRIPLE the above numbers if you are running BOTH the screen saver and wallpaper and DOUBLE the above numbers if you are running only the screen saver OR only the wallpaper.

In other words, at maximum size (1280 x 960) and 16 million colors, running both the screen saver and wallpaper, you would need to have more than 11 megabytes of memory dedicated to your wallpaper and screen saver alone.

Q: What can I do to decrease these memory requirements?

A: You have the following options:

- 1) Change your display driver to one that uses fewer colors (but no fewer than 256). Due to the fact that each image contains highly optimized color palettes, the images do not improve in quality at color depths higher than 256.
- 2) Don't use both the screen saver and wallpaper.

Q: My display driver is only 256 colors and I still get an error message at the top of the screen or a blank screen when the screen saver tries to run. What do I do now?

A: Open the Control Panel (found in the "Main" program group) and double-click the "Enhanced" icon. Click on the "Virtual Memory" button. Check the "Swapfile Settings" that appear in the Virtual Memory window.

Disney's Screen Scenes works best with a "Permanent Swapfile" of at least 3,500 KB. See your Windows manual for detailed instructions on how to create or modify your swapfile settings.

Windows will automatically recommend a size for your swapfile. In the Virtual Memory window, click on the "Change>>" button and look at "Recommended Size". If the number shown is less than 3,500 KB, then you don't have enough space on your hard drive to create a sufficiently large swapfile. Examine the contents of your drive for ways to free up space.

Q: I get a General Protection Fault (GPF) or Insufficient Memory error message when I try to run Disney's Screen Scenes. What does this mean?

A: Certain files on your hard drive have been damaged or corrupted, either due to a bad install or other reasons. Try the following steps to correct this problem:

- 1) Re-install the software from the original floppy disks.

2) If during re-installation you encounter an error message stating, "Unable to read from Drive A:" (or "Drive B:" if applicable), your installation disk is defective. Return the product to the vendor where you purchased it for an exchange. If the vendor will not exchange the product, call Disney Interactive Customer Support.

3) If re-installation is successful and the GPF or Insufficient Memory error continues to occur, you may have an outdated video driver that is not fully compatible with this program. Contact your video card manufacturer about updating your video driver software.

How to Reach Disney Interactive



Disney Interactive

Customer Support

1-800-228-0988

